



THE HEALING ADVANTAGE NEWSLETTER

WHICH IS IT? MASD OR PRESSURE INJURY

Clinicians are often faced with the age-old question: is it Moisture-Associated Skin Damage (MASD) or is it a pressure injury (PI)? Both can exhibit partial-thickness loss of skin, and both can affect the same areas of the body, so how can we easily tell the difference? MASD is a skin injury caused by moisture such as sweat, wound exudate, urine or stool. MASD is an umbrella term that includes four subcategories: Incontinence Associated Dermatitis (IAD), Intertriginous Dermatitis (ITD), Periwound maceration, and Peristomal dermatitis. The term "excoriation" is also used incorrectly often to describe both MASD and PI. In this month's newsletter, we hope to clear up the confusion between MASD and PI, discuss the difference in assessment findings, and provide management options.

Pressure Injury (PI)

Clinical Features:

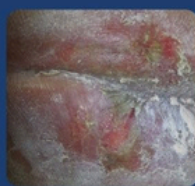
- Localized area of tissue damage
- Usually over a bony prominence
- Partial to full thickness
- Slough or eschar may be present
- Pain is common



Moisture Associated Skin Damage (MASD)

Clinical Features:

- Diffuse distribution
- Occurs in the presence of moisture
- Partial thickness
- No slough or eschar present
- Painful and raw



FREQUENTLY ASKED QUESTIONS

Q: Why isn't "excoriation" an appropriate term when describing MASD or a pressure injury?

A: "Excoriation" is a linear erosion of the skin created by mechanical means, like a scratch. A term like "denuded" or "diffuse" would be more consistent with MASD. A PI would be more localized with circumscribed edges.

Q: Can MASD evolve into a pressure injury?

A: Yes. MASD puts patients at risk for pressure injuries. A study in 2018 showed that 17% of patients with IAD developed a facility acquired pressure injury to the sacral area.

Q: What's best practice for managing MASD?

A: MASD is best managed with pH balanced cleansers, gentle wiping with a non-abrasive cloth, application of barrier creams, and absorptive dressings for wounds on fragile areas or wounds in contact with surfaces.

MASD TREATMENT GUIDELINES

Scan the QR code to be taken to the International Best Practice Recommendations for Prevention and Management of MASD. These guidelines are subdivided into the four categories of MASD with specific best practice statements for each.



Scan here to let us know which topic you're interested in next!